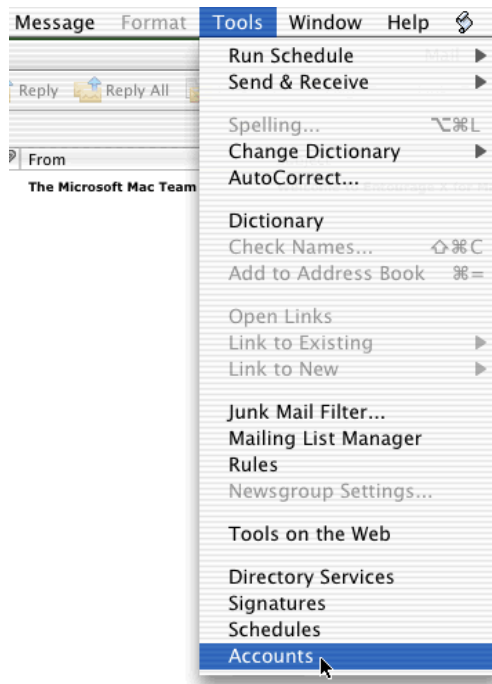


Setting Up Your E-mail in Entourage Mac

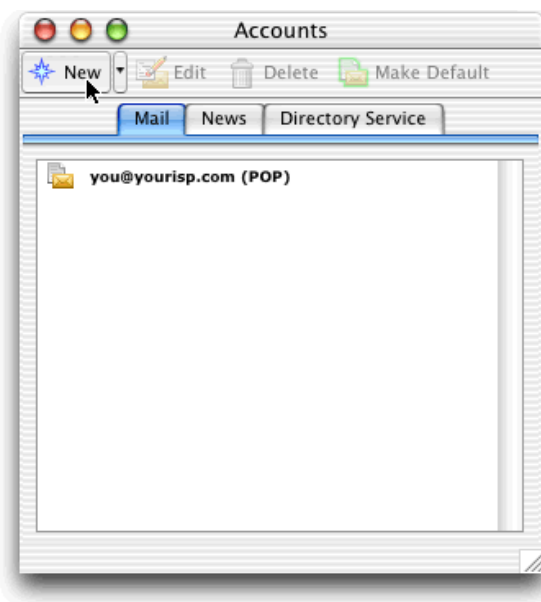
This tutorial shows you how to set up Entourage (Mac) to work with your e-mail account. You can set up previous versions of Entourage by using the settings in this tutorial.

To Set Up Your E-mail Account in Entourage

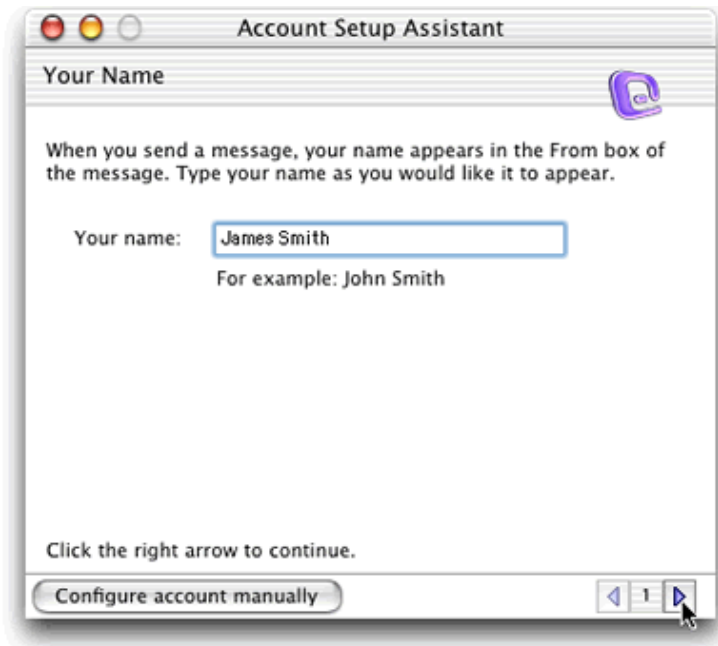
1. Open Entourage, Click "Tools" menu -> Select "Accounts"



2. Click the "Mail" tab and click "New" Button



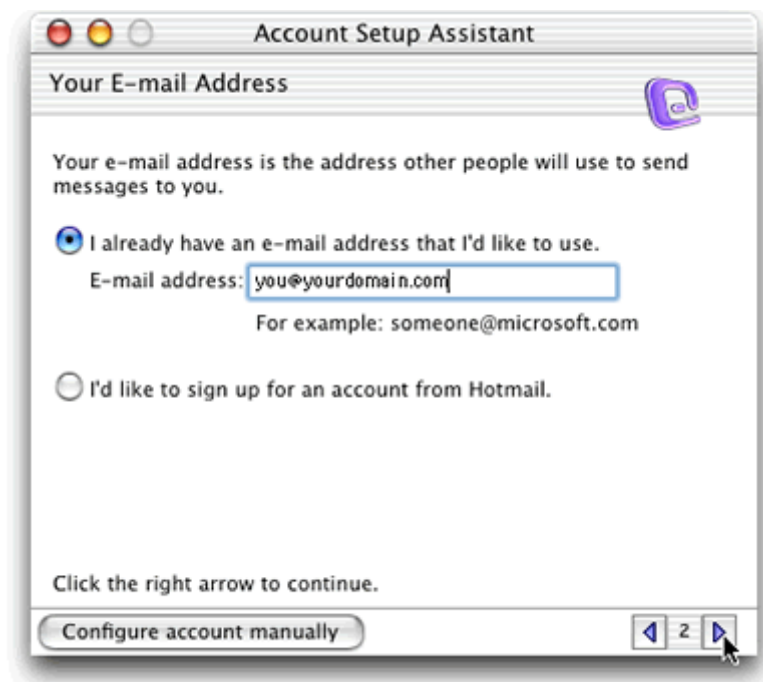
3. Enter your display name and click ">"



4. Select "I already have an Email address that I'd like to use"

E-mail Address

Enter your e-mail address and click ">"



5. Select "POP3" and enter mail.yourdomain.com as incoming mail server

Incoming mail server (POP3)

Enter your provided domain name Pop3 server address for your incoming mail server. (E.g. your domain is abc.com -> Your Pop3 Server: mail.abc.com)

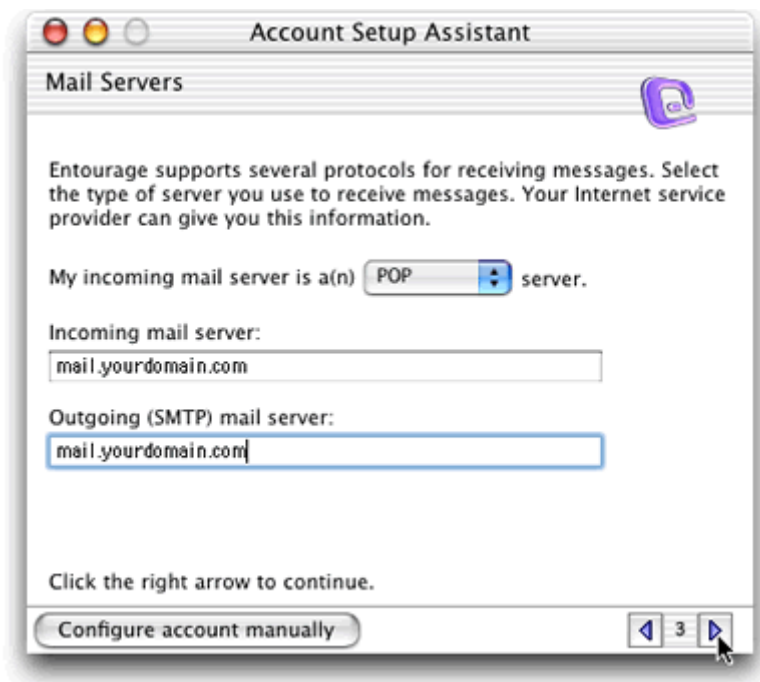
Outgoing mail server (SMTP)

Enter your ISP SMTP server or Webnix SMTP server for your outgoing mail server.

a. Hong Kong (ISP) SMTP Server:

1. Netvigator (smtp.netvigator.com)
2. Biz Netviagtor (corpmail1.netvigator.com)
3. i-cable (smtp.i-cable.com)
4. Hong Kong Boardband (smtp.hkbn.net)
5. HKNet (smtp.hknet.com)
6. PacificNet (smtp.pacific.net.hk)
7. Hutchcity (smtp.hutchcity.com)
8. Wharf T&T (smtp.wharfthk.com)
9. Pacific One Net (smtp.onebb.net)

b. Webnix SMTP Server : Same as incoming mail server (e.g. mail.abc.com)



Click ">"

6. Enter "Account ID" and password. Click ">"

Account ID

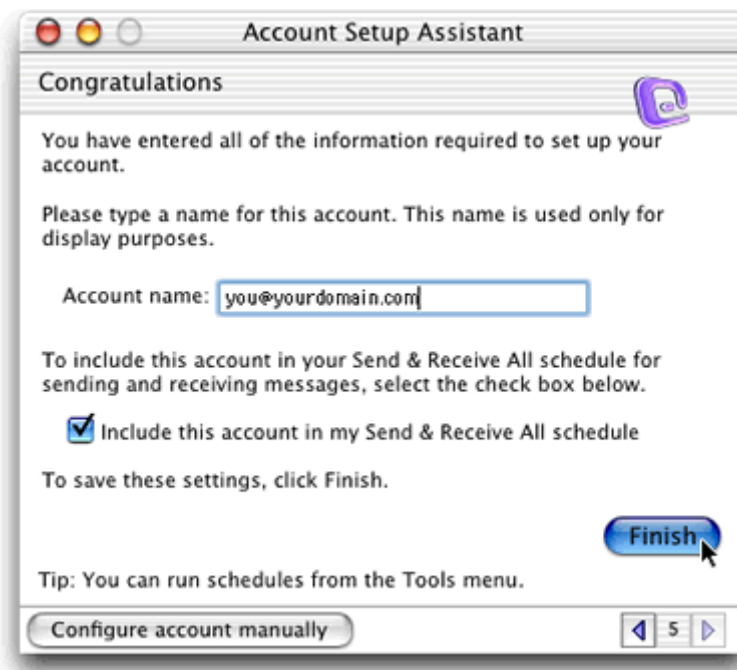
Enter your e-mail address, again.

Password

Enter the password you set up for your e-mail account.



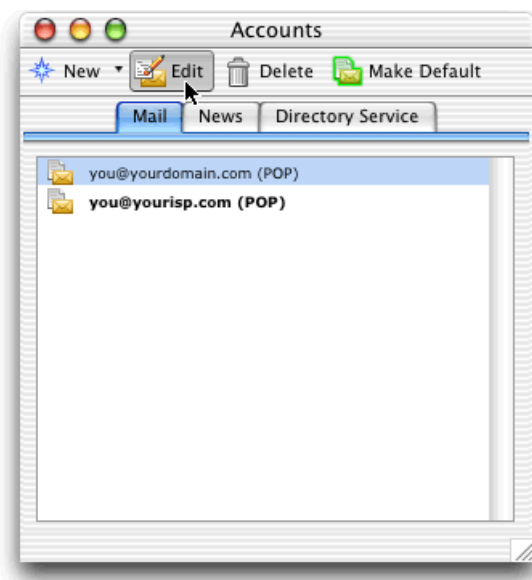
7. Enter an account name and click "Finish"



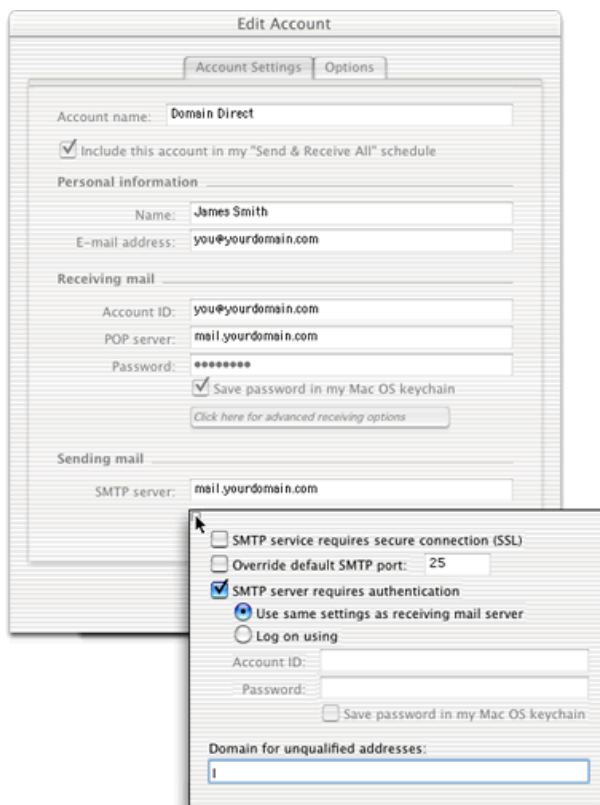
The following steps are for using Webnix SMTP server only. If you choose to use your ISP SMTP server, skip this part.

NOTE: "qm1webnix.com" or "dyxnet.webnix.com" is an SMTP relay server. In order to use this server to send e-mails, you must first activate SMTP relay on your e-mail account. Log on to your Manage Email Accounts page to set up SMTP relay. If you do not have SMTP relay set up and your Internet Service Provider (ISP) allows it, you can use the outgoing mail server for your Internet Service Provider. Contact your Internet Service Provider to get this setting.

- 8. Select the new created account and click "Edit"



- 9. Click on the "Click here for advanced sending options" button under "Sending mail" part



10. Tick the box "Override default SMTP port:" and change "25" to "6025"
11. Tick the box "SMTP requires authentication" checkbox if you use Webnix SMTP server
12. Select "Use same settings as receiving mail server"
13. After the above steps, click "OK"

